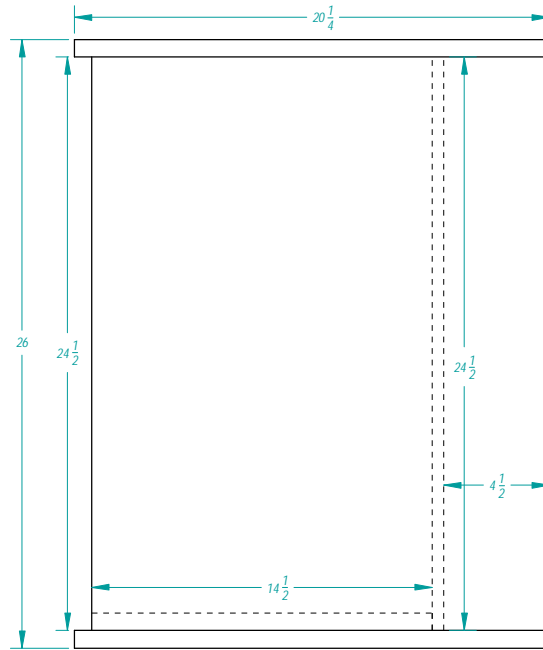
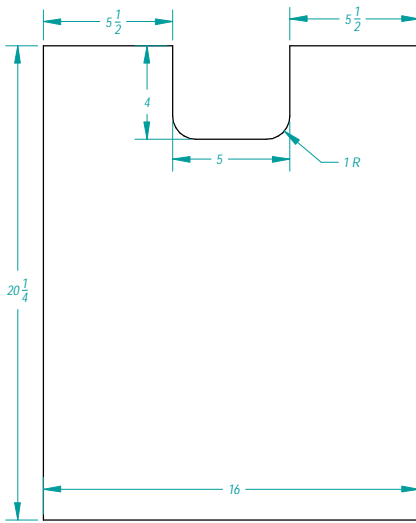


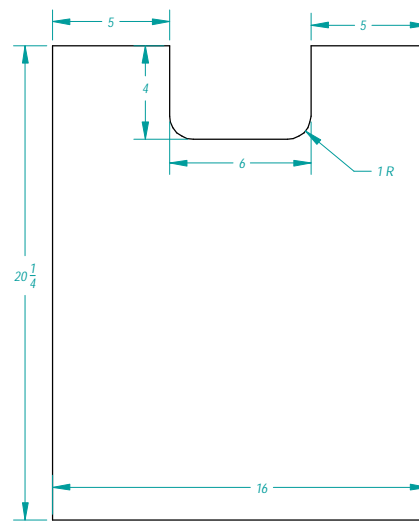
Front View



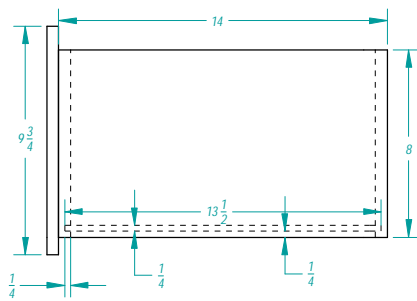
Side View



Top

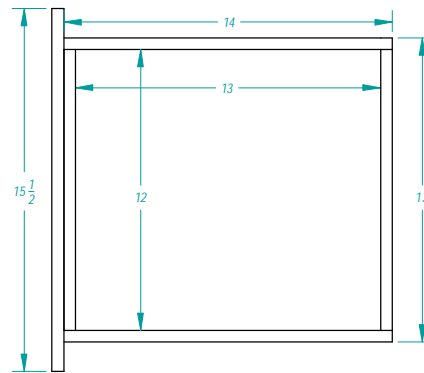


Bottom



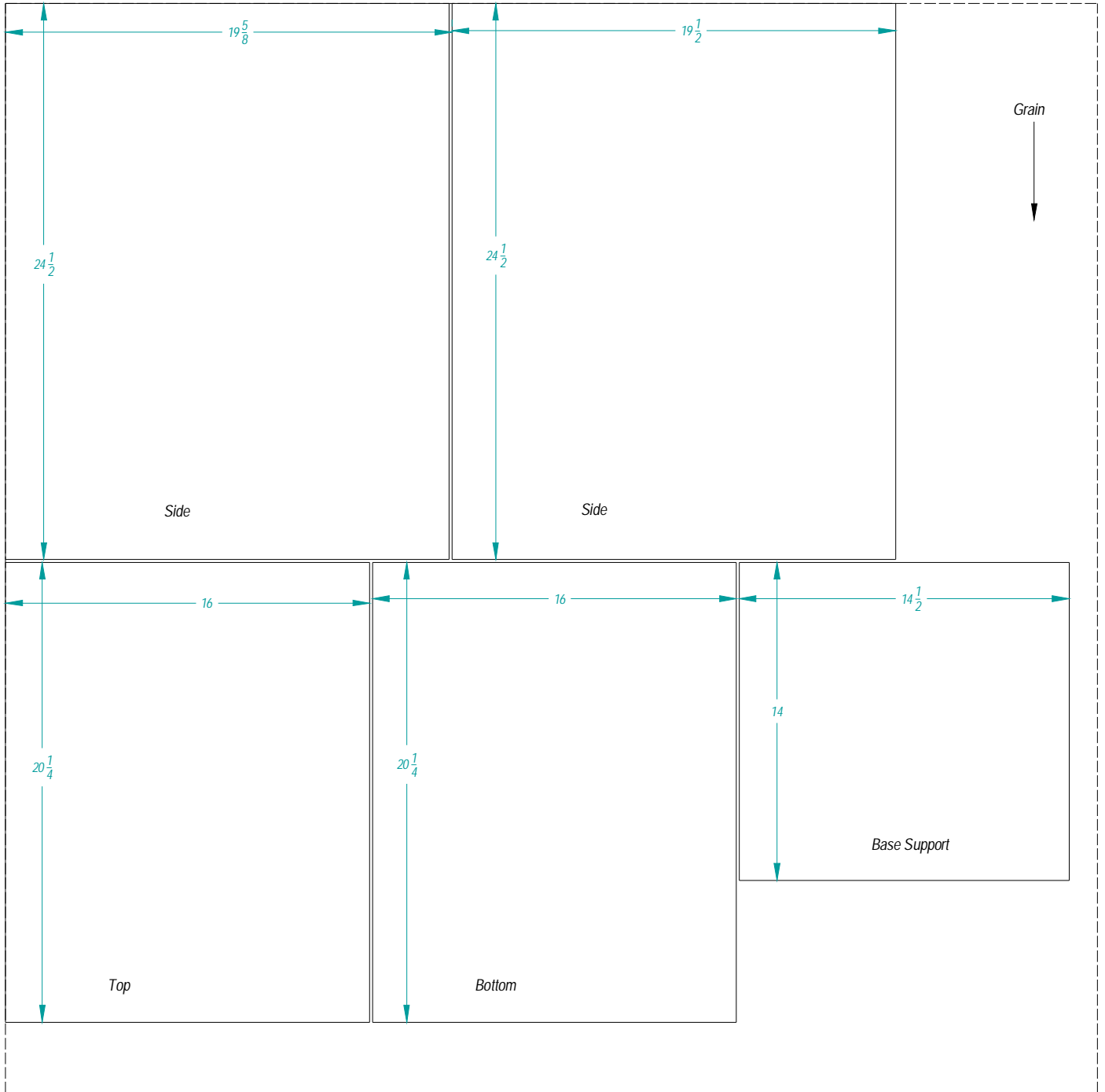
Bottom Drawer Side View

Plus two drawers same dimensions but
7-1/4" Face height & 6-1/4" drawer height.
With Bottom Edge of Face aligned with bottom edge of drawer.



Drawer Top View

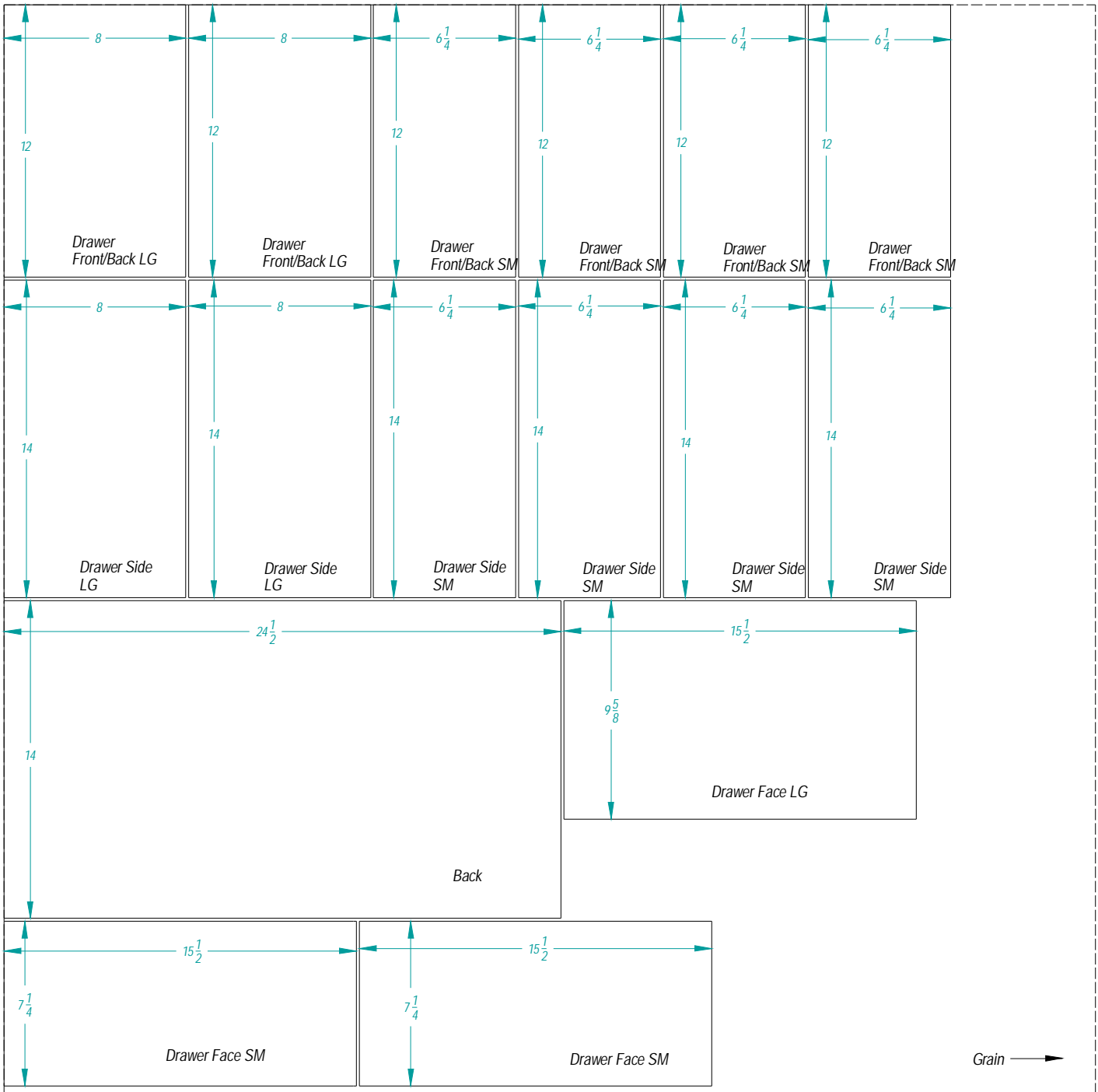
Cutting Diagrams



3/4" Ply. 48" x 48"

Cutting Diagrams

Plus Three Drawer Bottoms, 12-1/2" x 13-1/2" x 1/4" Scrap Stock



1/2" Ply. 48" x 48"